



National Chemical
Laboratories

TERRAZZO FLOOR CARE

Stone Care Solutions™



Advanced Care for Terrazzo



and other

Natural Stone Floors!

World Class Cleaning Solutions®

Stone Care Solutions™

An Advanced Program for Terrazzo, Marble & Granite!

The natural beauty and elegance of polished terrazzo flooring is timeless. Because of its durability, terrazzo is a desired floor surface for school hallways, airports, modern supermarkets, government buildings, convention centers and many other facilities that require a floor surface that can withstand extreme traffic conditions.

In the past, maintaining a high level of gloss usually meant applying coat after coat of traditional floor finishes that offer protection and a typical "plastic" appearance, but would likely retain soils and require regular buffing, scrubbing, recoating and periodic stripping and renovation to keep floors with a showcase appearance.



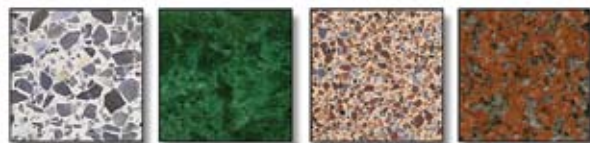
NCL has engineered a new 2-step method for naturally polishing and maintaining these floors.

ROCK HARD Step 1 Stone Hardener will harden the surface of the terrazzo, thus making it ultra resistant to scratching and staining.

This provides the ideal "base" which enables **DIAMOND GLOSS** Step 2 Stone Rejuvenator to produce a rich high gloss. When used as directed, this system will continue to harden and densify the surface of both cementitious and resinous terrazzo floors. The newly polished surface has a bright, durable, high gloss which will require a minimum of maintenance, resulting in outstanding savings of labor and maintenance for your facility.

KEY PROGRAM FEATURES / BENEFITS

- *Creates an exceptionally tough, brilliant natural gloss that provides maximum resistance to scratches, scuffs and re-soiling*
- *Long Lasting - up to 5 years before diamond renovation is required*
- *Promotes outstanding labor and product cost savings compared to conventional polishing / coating programs*



The products...

ROCK HARD™

Step 1 Stone Hardener



ROCK HARD is the first step of a synergistic two-step polishing and maintenance program for all types of terrazzo and natural stone. ROCK HARD works to harden the surface of terrazzo, marble and granite. Then, with the use of DIAMOND GLOSS, an easy-to-maintain, super high gloss is produced on the surface. Terrazzo (both cementitious and resinous) will be improved with this process. It is recommended for polishing hard marble surfaces (such as serpentine) and most types of granite. It works to form a protective layer at and below the surface. Continued use of this product will increase the density of the surface. This will make the surface more resistant to wear and staining.



Product Code # 2506
Packaging:
4/1 Gal. Bottles / Case

DIAMOND GLOSS™

Step 2 Stone Rejuvenator



DIAMOND GLOSS is the second step of a synergistic two step polishing and maintenance program for terrazzo and natural stone. DIAMOND GLOSS works to produce a super tough, super high gloss on all natural surfaces. Creates maximum gloss on terrazzo, marble and granite which have been treated with ROCK HARD Step 1. Terrazzo (both cementitious and resinous) will be improved with this process. It is recommended for polishing hard marble surfaces (such as serpentine) and most types of granite. Surface is ultra resistant to scratches and scuffs. It reduces long term labor costs. The surface is dramatically more resistant to wear and staining.



Product Code # 2523
Packaging:
4/1 Gal. Bottles / Case

Accessory Products



ENFORCER™
Heavy Duty Floor Stripper
Product Code # 2505
Packaging:
4/1 Gal. Bottles / Case,
5 Gal. Pails



HURRICANE™
Intensive Stone Cleaner
Product Code # 2510
Packaging:
4/1 Gal. Bottles / Case



PATINA™
Soap Based Stone Cleaner
Product Code # 2504
Packaging:
4/1 Gal. Bottles / Case,
12 - 32 oz. Bottles / Case



STONE KLEAN™
Daily Neutral Stone Cleaner
Product Code # 2503
Packaging:
4/1 Gal. Bottles / Case,
12 - 32 oz. Bottles / Case

STONE BLAZER™
17" Ultimate Duty Stone Restoration Machine
Product Code # 2530



NAT-SPEED™
17" High Productivity Diamond Driver
Product Code # 2551
Packaging:
Individual



NAT-SPEED™ is a high productivity pad driver designed for use with the STONE BLAZER machine. This pad driver increases the diamond's ability to rapidly remove surface scratches. Works up to 6 TIMES faster than conventional pad drivers, saving significant labor, time and money.



AQUA MAGIC™
18" Floor Pads
Product Code # 2118
Packaging:
5 Pads / Case



STEEL FORCE™
17" Woven Steel Wool Pads
Product Code # 2117
Packaging:
12 17" Pads / Case



LUMINAIRE™
3" Diamond Floor Pads
Product Codes:
50-Grit - 2305
120-Grit - 2306
220-Grit - 2307
400-Grit - 2308
800-Grit - 2309
1800-Grit - 2310
Packaging:
Individual

The process...

Evaluate Existing Floor Conditions

The results of this process will be affected by the current condition of the terrazzo floor. Cementitious floors which can be porous will take longer to reach a maximum level of shine. Resinous floors will become shiny with a couple of passes.

Terrazzo floors can have many pits and holes from chips that have come out of the matrix. **ROCK HARD** and **DIAMOND GLOSS** will produce a gloss on this surface. The surface of the terrazzo will reflect light. But the look can be greatly improved by smoothing out the surface with diamond abrasives. Use 220-grit, 400-grit and 800-grit diamonds to flatten and lightly polish the floor. If diamond surface preparation is required, this step will not need repeating for a number of years if the program is used as directed.

The LUMINAIRE Diamond discs can produce a smooth surface with little effort. Use the **STONE BLAZER** with extra weight to remove wear areas and smooth out the surface so that the **ROCK HARD** and **DIAMOND GLOSS** will have a good base with which to work.

Helpful Hints:

- *If time is a factor, try using just an 800-grit to improve the surface.*



Hardening the Floor with ROCK HARD

ROCK HARD will harden the surface of the terrazzo. It works by forming a film within the surface of the floor. Repeated use of this first step will increase the hardness and the gloss level of the terrazzo.

DIRECTIONS FOR **ROCK HARD** STEP 1 STONE HARDENER

SURFACE HARDENING: The surface must be dry and free of any coatings, grease or oil. Remove any floor coatings by using **ENFORCER** Heavy Duty Floor Stripper; greases or soils should be removed with **HURRICANE** Intensive Stone Cleaner. Mist 4 trigger pulls of **ROCK HARD** Step 1 onto a 9 sq. ft. (1 sq. m) area. Buff with a **AQUA MAGIC** pad until dry. Repeat this process 1-2 more times until a slight gloss is achieved. Best results are obtained using the **STONE BLAZER** floor machine with a total weight between 140-180 lb. It may be necessary to repeat this 3-4 times on very porous stone or cementitious terrazzo. Then mist 3 more trigger pulls of **ROCK HARD** Step 1 and buff with a **STEEL FORCE** pad until the surface is dry. Repeat process until surface has a moderate gloss at a 60° angle. The surface is now prepared for using **DIAMOND GLOSS** Step 2 Stone Rejuvenator.

NOTE: If moisture is present, the **STEEL FORCE** pad may leave a dark transfer.

Use an **AQUA MAGIC** pad and buff **ROCK HARD** until dry.

COVERAGE: For **ROCK HARD:** 25,000 - 30,000 sq. ft. (2300 - 2800 sq. m) per gallon.



Helpful Hints:

- *The porosity of the floor will determine the number of times this step is repeated*
- *Cementitious terrazzo will require more product than will resinous, and may require 5-6 repetitions*
- *2-3 repetitions may be all that is necessary for resinous terrazzo*
- *The shine will increase as the floor dries out. Approximately 30 minutes*
- *The slower the machine is moved across the floor while buffing the sooner it will dry*
- *The more weight on the machine, the faster it will dry*
- *Very worn floors may require added weight (up to 180 lb.) on the Stone Blazer*



The process...

Polishing the Floor with **DIAMOND GLOSS**

DIRECTIONS FOR **DIAMOND GLOSS** STEP 2 STONE REJUVENATOR

STONE REJUVENATION: Prepare surface by using **ROCK HARD** Step 1 Stone Hardener following label directions for surface hardening until a moderate gloss is achieved and floor is ready for **DIAMOND GLOSS** Step 2. Mist 4 trigger pulls of **DIAMOND GLOSS** Step 2 onto a 9 sq. ft. (1 sq. m) area. Buff with a STEEL FORCE pad until dry. Repeat until maximum shine has been reached. Best results are obtained using the STONE BLAZER floor machine with a total weight between 140-180 lb.

Daily Maintenance

Use PATINA Soap Based Stone Cleaner at 2 oz. per gallon of cool water for increased slip resistance and to brighten natural stone or terrazzo. Mop mixture onto floor and allow to dry. The floor may be buffed with any speed equipment (from 175 RPM to Ultra High Speed) with an AQUA MAGIC pad to increase the gloss level. You may also use STONE KLEEN Stone Cleaner, diluted at 1-2 oz. per gallon of cool water. STONE KLEEN is ideal as a low foaming cleaner for use in an auto scrubber, used at the same dilution.

NOTE: If moisture is present, the STEEL FORCE pad may leave a dark transfer.

Use an AQUA MAGIC pad and buff **DIAMOND GLOSS** until dry.

COVERAGE: For **DIAMOND GLOSS**: 30,000 – 35,000 sq. ft. (2,800 – 3,250 sq. m) per gallon.

Helpful Hints:

• Porosity will determine how many repetitions will be necessary for best results



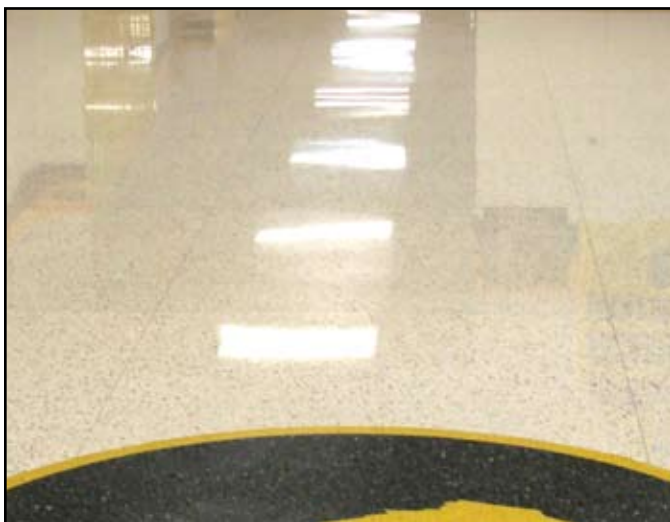
Process Continuation

The hardening process will require multiple applications to completely harden the surface of the terrazzo. The number of applications will be determined by the composition and porosity of the terrazzo. Cementitious terrazzo will require more work than will a resinous floor.

When it has been determined that the surface has begun to dull and show wear it will be necessary to repeat the use of **DIAMOND GLOSS**.

The result...

**A natural gloss
and surface
hardness
never before
attainable with
conventional
terrazzo
programs!**



Program benefits...

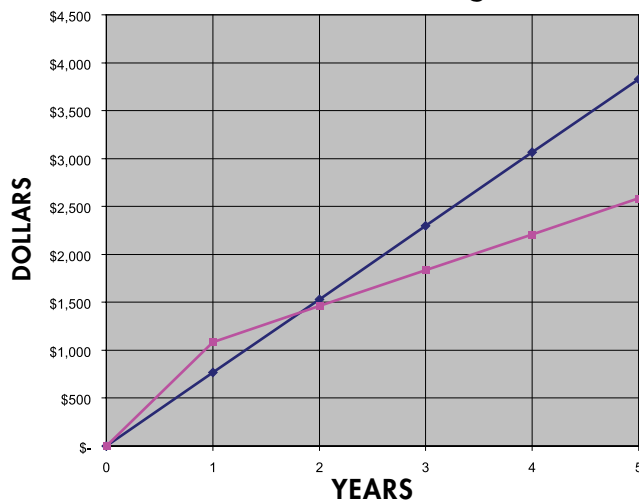
Program Advantages

- Multiple applications of the products will continue to harden the terrazzo and produce a rich high gloss. At the same time, floors will be maintained with less and less expenditure of time and product.
- As opposed to coatings that require high speed or UHS Burnishing to remove scuffs and scratches (in the coating film), the natural polish now in place will not scuff or scratch. Floor burnishing is not required.
- The natural polish that you achieve will not accumulate soils as with conventional coatings. **ROCK HARD** and **DIAMOND GLOSS** combine to provide your facility the ultimate in long lasting durability and beauty!

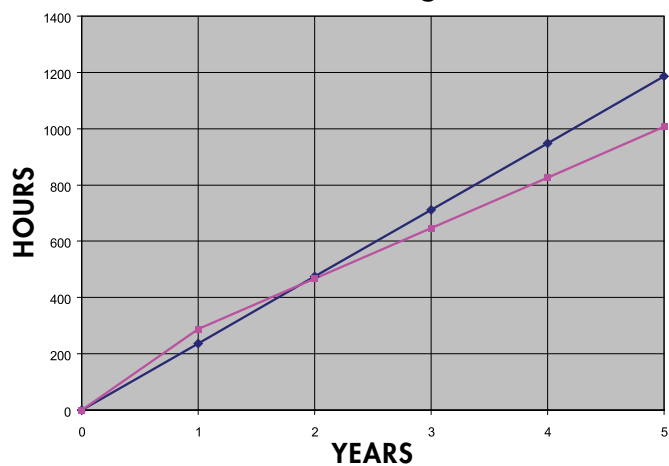


Cost Saving Advantages

Product Savings*



Labor Savings*



* Based on a 5 year maintenance program.

- Overall product and labor costs are comparable through the first 7-9 months of installation of the new program, as there is more labor used to prepare the floor for this polishing method. As shown in the charts above, in subsequent months, the cost savings for both product and labor is dramatic, as much as 40 - 60% when evaluated over a 5-year period!



401 N. 10th Street • Philadelphia, PA 19123
www.nclonline.com • e-mail: info@nclonline.com
www.stonecaresolutions.com • 1-800-628-2436

DISTRIBUTED BY:

